

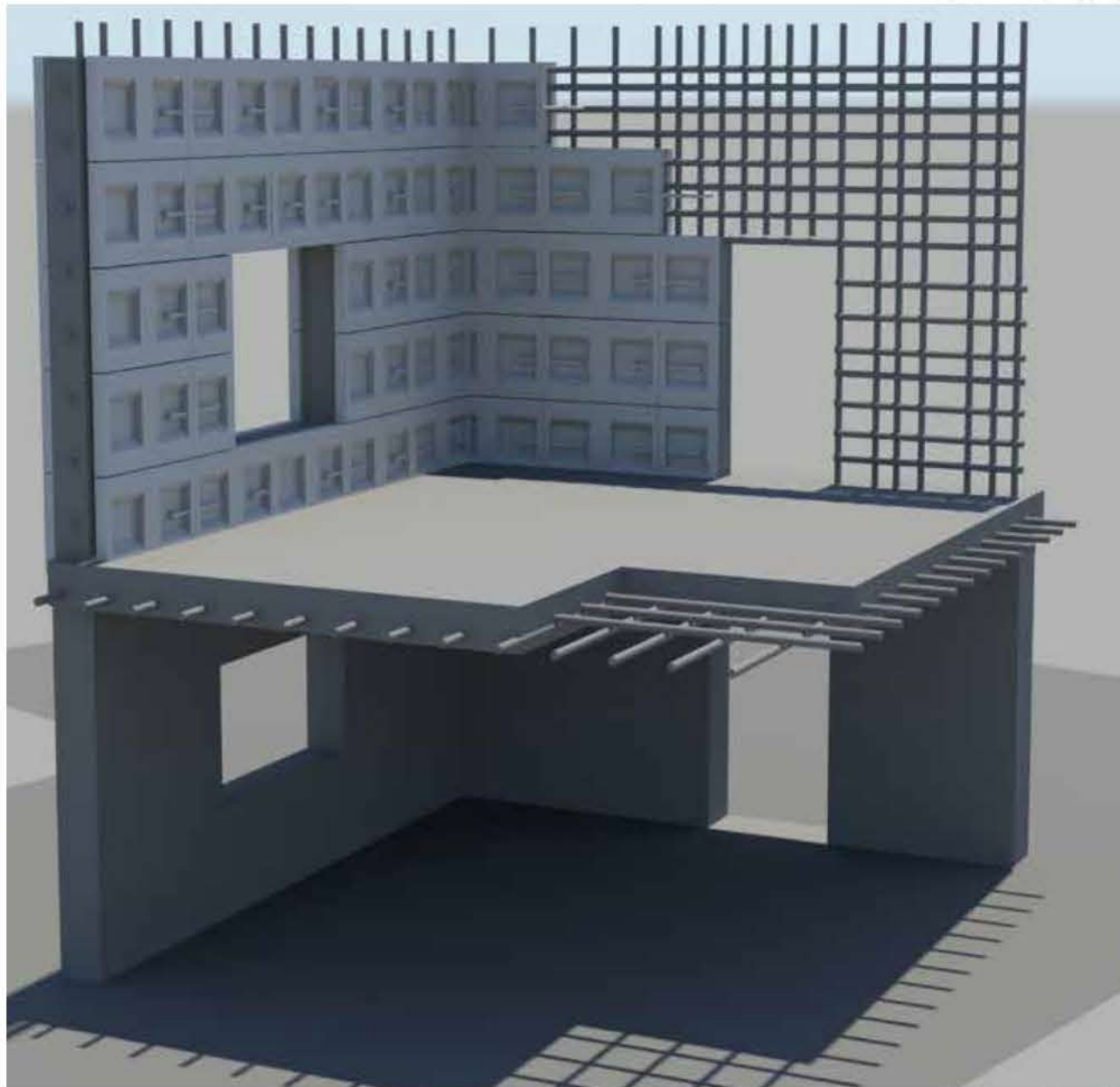


Cable Trays ■ Fencing ■ Gabions ■ Gratings ■ Housing

www.skweldedmesh.com

HOLDING TOGETHER
THINGS THAT MATTER

Reinforcement Mesh



Technical Specifications

- Mesh conforming to IS 1566
- MOC - plain bars and ribbed (TMT / TOR)
- Mesh Size - non-standard engineering mesh
- Mesh Panel size up to 4m x 6 m (including free hangs)
- Wire Diameter – up to 16mm
- Coating - Post Galvanized / Epoxy

Application Areas

Tunnels And Bridges Construction

- The strength and flexibility of welded fabric is crucial in construction and reinforcement of arches and domes, thereby preventing the emergence of cracks in the structures.
- The flexibility of Welded Fabric is crucial in construction of arches and domes where the task of reinforcing would otherwise be very cumbersome.
- The structural economies of form in Arches and Domes are complemented by economies of steel with light and closely spaced wire Fabric.



Road Bed Construction

Road construction time is reduced considerably when welded wire fabric is used instead of traditional RCC

- Extensively used for quick repairs / resurfacing of bridge decks under congested conditions
- Closer spacing of thinner wires
- Saves steel
- Reduces slab thickness
- Ensures crack free lush surfaces
- Reduces crack developments due to structural moments (En 10223-7), en 10245-1



Pre Fab Wall

Prefab walls are factory assembled based on your building plans, and enable your construction project to begin regardless of the weather.

- Respect for schedules
- Superior quality
- Trained and qualified employees
- Optimized installation
- Adequate tools Minimal time on the construction site

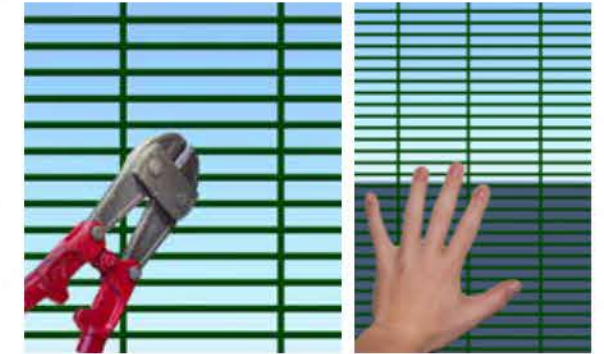


Fencing



Weldmesh Panel

- Anti-climbing: more small openings, no toe or finger holds. Anti-cut: robust wire and welded joints make cutting very difficult by bolt cutters and wire cutters.
- High strength welded at each intersection.
- Durable: Zinc or polymer powder coating ensure a long service life.
- Mesh fencing specially configured to provide maximum visibility, especially used for emergency and electronic detection systems.



Chain Link

Our galvanized/ PVC coated chain link fence can be fenced directly or can be fixed with angle frames. Chain link fencing is an interlock fence used for providing barricades at different perimeters such as boundaries of parks, green belts, airports, power-houses etc.. Chain link fencing also conforms to IS:2721:2003 specifications. Galvanized Chain Link Fence that we offer is perfect for protecting boundaries from trespassing & intrusion



PTCC & Barbed Wire

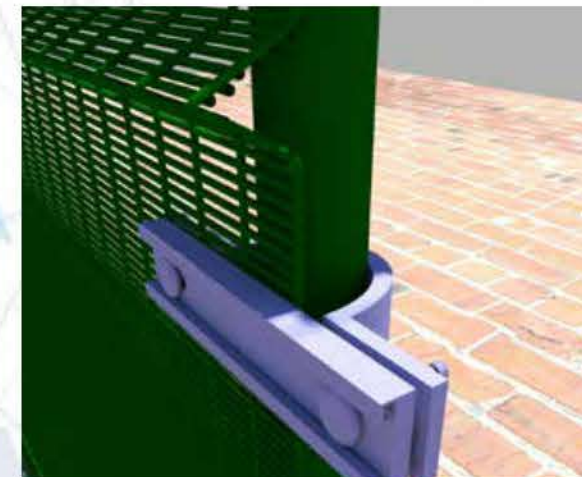
Our company manufactures superior quality of Punched Tape Concertina Coils and G.I Barbed Wire catering to different industrial needs. These wires are actually wires with series of dangerously pointed pins or sharp tapes on it. This type of fencing is extremely difficult to cross, since they cut and tear anything falling on them.

Fencing Accessories

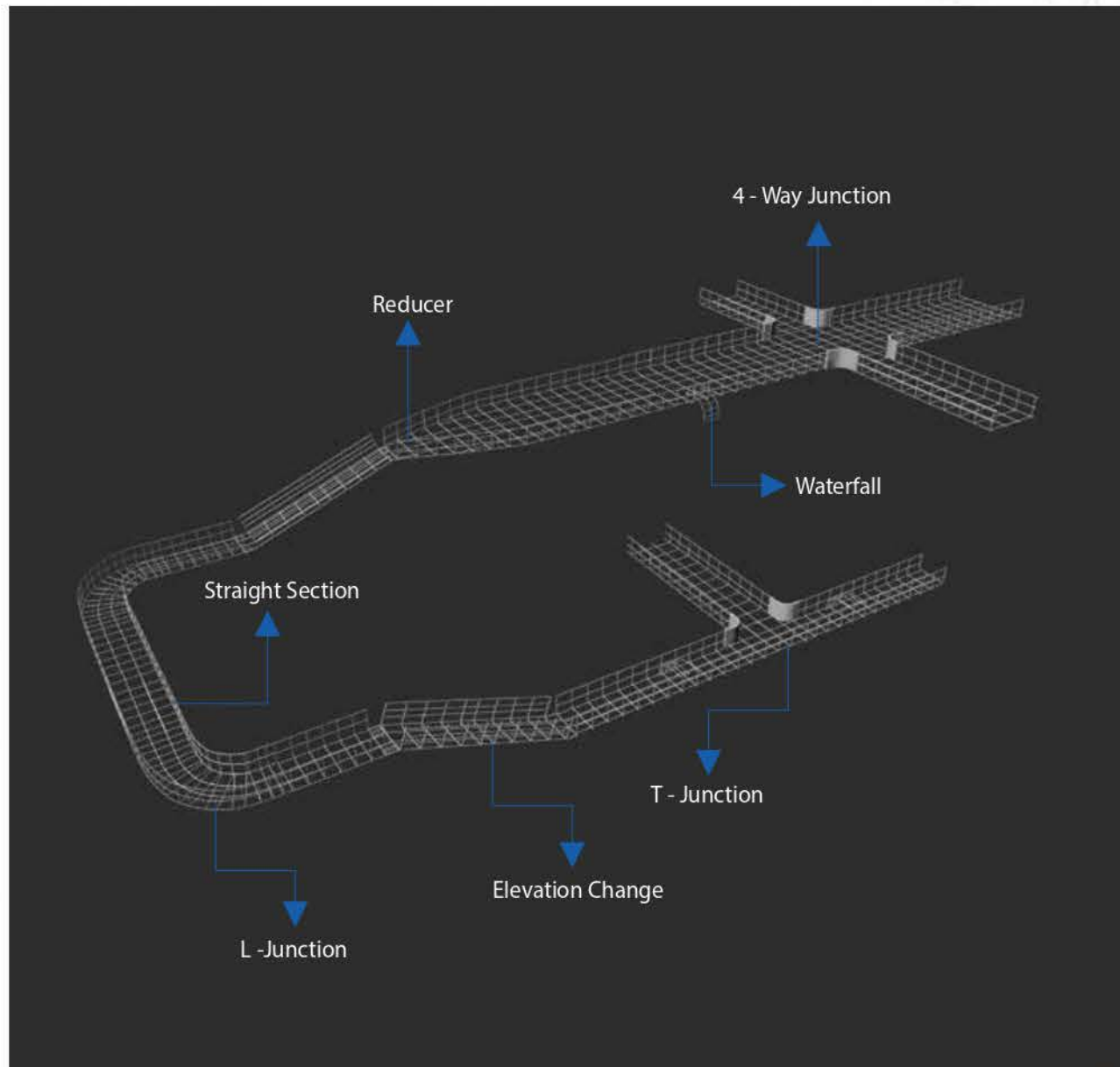
We provide all accessories for installation of fencing, including Posts, nuts and bolts. Our products also come in Pre-galvanized, Post galvanized and Powder Coated types.

Technical Specifications

- Conforms to EN 10223-7 standards and Mesh panels of 3m X 3m are available
- Our company manufactures superior quality G.I Barbed Wire and Punched Tape Concertina Coils catering to different industrial needs
- Our concertina coil conforms to CQAE/5660/1602/A specifications and Barbed wire conforms to BIS:278:2009 standards
- Chain link fencing one of our major products also conforms to IS :2721:2003 specifications



Cable trays (SKABLOTRAYS)



Longevity & Maintenance Free

Regular cleaning of trays is not required as no dirt or waste gets accumulated on them because of its design.

Prevents Overheating

Its design allows for better air circulation and heat dissipation thus reducing numerous potential problems caused by overheating cables.

Flexible & Easy to Install.

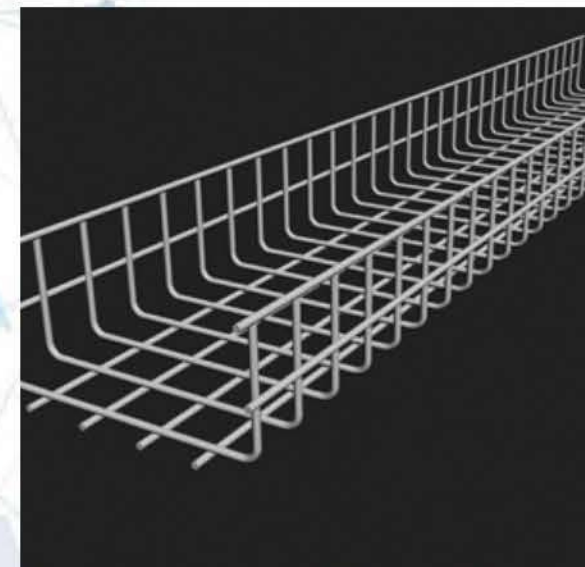
One of the main benefits of wire mesh tray is that its cheaper and quicker to install. The flexibility provided by being able to create fittings on site can be invaluable especially when you consider just how quickly these bends and fittings can be made.

Safety Edge

The edge wires are safely T-welded to provide smooth surface for the cables while loading and protects them from cuts due to sharp edges

Technical Specifications

- Standard specifications of trays with a width of 600mm and depth of 100mm can take loads up to 300 kg per meter. It can be increased with further customization.
- The wire diameter is 4mm(customizable). Mesh size - 100mm X 50mm (customizable)
- Our Cable Mesh has been tested in accordance with NEMA standards and Indian Standards.
- Available in Pre galvanized , Post Hot Dip Galvanized , Powder Coated and Stainless Steel.



Application Areas

Wire mesh cable trays are a lot lighter than regular perforated sheet cable trays and hence cost effective for similar load ratings. It finds its applications in power plants, airports, hospitals, substations, housing projects etc.

Gabions



Technical Specifications

Our product conforms to IS 16013:2012 specifications. This product can be supplied with customized mesh as per user requirement.

LENGTH m	HEIGHT m	WIDTH m	NUMBER OF CELLS	CAPACITY m ³
1.80	0.90	0.90	2	1.46
2.70	0.90	0.90	3	2.19
3.60	0.90	0.90	4	2.92
1.20	1.20	1.20	1	1.73
2.70	0.90	0.30	3	0.73
2.70	0.90	0.45	3	1.09

Applications



Retaining Walls

Gabion walls can be built with speed and economy and are particularly suitable for landslide control in mountains. In-ground liable to subside, the capacity of gabions to deform makes them preferable over a concrete wall.

Fly over & More

Gabions can be used as stacking platform entity for fly over's and over bridges or slopes against erosion. Other uses include noise barriers and silt filtration from runoff. The Gabions can be used to protect scouring around the bridge piers and other important structures.



River Banks

Gabion banks are constructed to protect the seacoast or the River Coast against the erosion due to water and waves. Gabions will withstand alternative tension and compression without losing structural passage of water throughout the structure. Also they are found to be more advantageous than other gabions in marine and river environment as they are inert to alkaline and acidic attack. They are much reliable and long lasting than marine structures constructed using the dumping of stones.



Advantages

- Lighter and cheaper than concrete
- Higher tensile strength
- Easier to construct, doesn't requires technicians and aesthetically looks very good.
- Gabion baskets and mattresses assembled from welded wire mesh have a dimensional accuracy of better than 0.5 percent versus typical tolerances of plus/minus 5.0 percent for twisted mesh

Electric Fence System



The Solar Perimeter Security Electric Fence system is a modern day alternative to conventional methods of fencing to protect the perimeter.

HOW DOES THE SOLAR ELECTRIC FENCE SYSTEM WORK?

When any intruder comes into contact with the electric fence, they receive a sharp, short, painful but safe electric shock. The shock does not cause any physical damage. The electric fence acts as a strong psychological barrier as any intruder avoid coming into contact with the Electric Fence, once they experience the shock. After a period of conditioning, the mere presence of the fence acts as an effective barrier even if it is not powered 'ON'.

Electric fence can detect a fault on the fence like shorting or cutting of the wire due to tampering on the fence with the Alarm system.

Technical Specifications

- Energizer is in accordance with IEC 60335-2-76.
- The system is capable of providing maximum 5 joules of shock energy anywhere on the fence.
- The insulators are made from UV resistant material & tested to withstand a minimum arcing voltage of 15 KV.
- System is in accordance with SANS 62305 - Protection against lightning.
- Battery power available in energizer in case of power failure, can operate on solar power also.
- After detection of intrusion, it can send signal to CMS & PTZ camera detect the intruders visually.

Several Advantages

Deterrence, Detection, Delay

- Deter potential intruders from accessing your premises.
- Stands in their way as a physical intimidating barrier.
- The shock that these fences deliver is non-lethal so it's enough to stop most people in their tracks.
- High security options such as intruder alarm detects the intruder's presence.
- Not dependent on regular electricity supply as it operates on solar power with battery backup.
- Most effective method of fencing and is safe to all kinds of animals and to human beings.
- Fewer Maintenance Costs.
- Ease of Installation.



Why Electric Security Fences Are a Smart Way for Perimeter Security?



Versatility

Almost any existing fence structure can be modified to include an electric fencing component. It can be added to the top of a wall structure to deter intruders from climbing over, or at the bottom of a security fence to stop trespassers from crawling under. It can be installed on cement walls, chain-link fencing & even decorative wrought iron fencing.

As you can see, electric fencing offers many benefits besides their ability detect, deter, and delay unwanted intruders.

Perimeter Intrusion Detection System



Perimeter Intrusion Detection Systems (P.I.D.S) are systems used in an external environment to detect the presence of an intruder attempting to breach a perimeter.

Components Involved:

- Command & Control
- Radar
- CCTV Surveillance
- OFC Vibration Sensors
- PIR Sensors
- Server & Network Rack
- Drone



Command & Control

Heart of the security surveillance system. All the components are connected to the Command and Control centre. Upon receipt of an input signal it instructs a set of components to behave in a particular way. For example, input signal from radar can trigger a PTZ camera which can further trigger a spotlight/drone/siren.

- It detects, tracks, and targets the intruders upto 5 Kms outside the perimeters.
- Paramount design, site specific solutions including the use of maps and site plans with live camera interfaces.
- The Command and Control centre system targets the violation of rules set in the zone when a breach occurs.
- The entire system is controlled and monitored from a central control room.



Radar



Radar is a detection system that uses radio waves to determine the range, angle, or velocity of objects. It can be used to detect aircraft, ships, spacecraft, guided missiles, motor vehicles, weather formations, and terrain.

- Provides a continuous coverage in a wide area.
- Auto Thermal/PTZ/Bullet - slew to cue.
- Walking/running/crawling can be detected.

CCTV Surveillance

Thermal/PTZ/Bullet cameras can come in a wide range of styles, making them easy to fit into your surveillance system, although the most common form factor is a dome.

- User switchable (single) or simultaneous (dual) thermal/ optical video output.
- Human detection range upto 500 m, Thermal PTZ can go upto 5 km.
- Robust design rated to an industry leading IP68/ NEMA 6P/IK10.
- Advanced privacy masking and image stabilization (optical camera only).



OFC Vibration Sensors (Buried Solution)

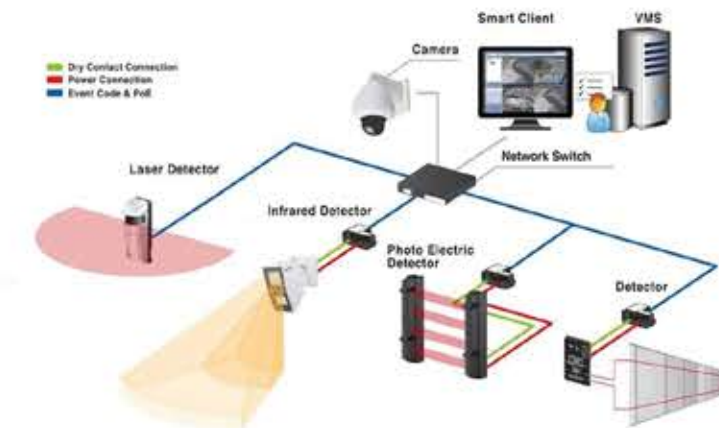
When buried underground or installed on wall-top with gravels covering on it, the sensing fiber is completely invisible, thus leaving landscapes unchanged. This prevents tampering and intruder by-pass of the detection area.

The system with built-in Intelligent Identification Algorithm can reduce the false/nuisance alarm to the lowest level by differentiating actual intrusions from global noises (rain, snow, wind, hail storms and small animals).

Method of Detection	Fiber optics sensor
Number of Detection Zones	2 zones 4 zones 6 zones
Type of Sensing Fiber	single mode fiber
Sensor Sensitivity	uniform over entire fiber
Rated Voltage	100~260 V/AC, 12V/DC (optional)
Operating Temperature Range	-30°C ~ 70°C for the controller -30°C~75°C for fiber sensors
Output Alarm	Sound/LED/LCD/Relay
Dimensions (W x H x L)	350mm x 100mm x 428mm
Fiber Connectors	SC-APC Type



PIR Sensors



A passive Infrared Sensor (PIR sensor) is an electronic sensor that measures infrared (IR) light radiating from objects in its field of view.

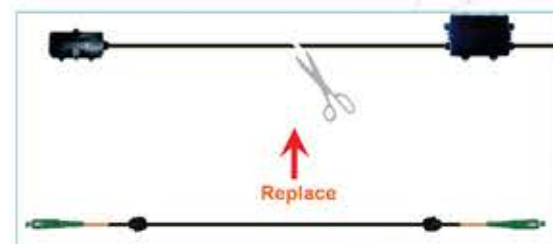
- When an intruder comes in the detection range of the PIR sensor, the sensor generates an output of 3.3 volts.
- This output is further amplified and is used for activating the relay of the lighting system and the camera.

OFC Vibration Sensors (On The Fence)



- OFC based vibrations sensors enhance a security team's ability to detect and respond to intrusion events.
- The system employs a fence-mounted fiber optic sensing cable for vibration detection and a central sensing device analyzes both the magnitude and pattern of the vibration signatures.

- Damaged fiber cable can easily be removed within 2 hours without disturbing the working and functions of other remaining zones.
- P.I.D.S is virtually maintenance-free after installation, thus lowering the maintenance cost.



Server & Network Rack



Form Factor	Workstation/ server
Processor	Intel Xeon Recommended
Memory	32 GB or Higher
Graphics	4 GB or Higher (Add On)
LAN	Dual 1 GBPS
Storage	10 TB or Higher
OS	Windows 10 Pro 64 Bit or Windows 2018 server

Drone

- Advanced flight control - Can hover around a target and drop payloads when required.
- UAV borne remote sensing - Can be triggered by command and control software and reach the target with GPS co-ordinates.
- **Customizable-**
 1. Endurance time
 2. Camera capabilities
 3. Payloads



About Us

We are registered with NSIC and our products conform to the relevant Indian Standard codes. All the products mentioned are manufactured at our production facilities situated in Kolkata to serve our clientele with faster deliveries and lower transportation costs. In our state of the art facilities, we adhere to stringent quality measures, which has led us to manufacture unmatched quality products with minimal tolerances. We have supplied to all major infrastructure companies in India requiring welded mesh used in making Pre-fab structures, hydel power plants, mivan shuttering, tunnels, roads, bridges etc. We are keen on supplying quality products and contribute to the all around development of society by evolving using an ethical and consumer friendly approach.



S.K.Weldedmesh Pvt. Ltd.

S. K. Weldedmesh Pvt. Ltd.



Corporate Office:

147, Netaji Subhas Road, 3rd Floor
Suite No. 54 & 55, Kolkata-700001

Retail Outlet:

Shree Shyam Hardware Co.
135, Netaji Subhash Road, Kolkata - 700001

☎ 033 22682075

✉ info@skweldedmesh.com

Website: www.skweldedmesh.com